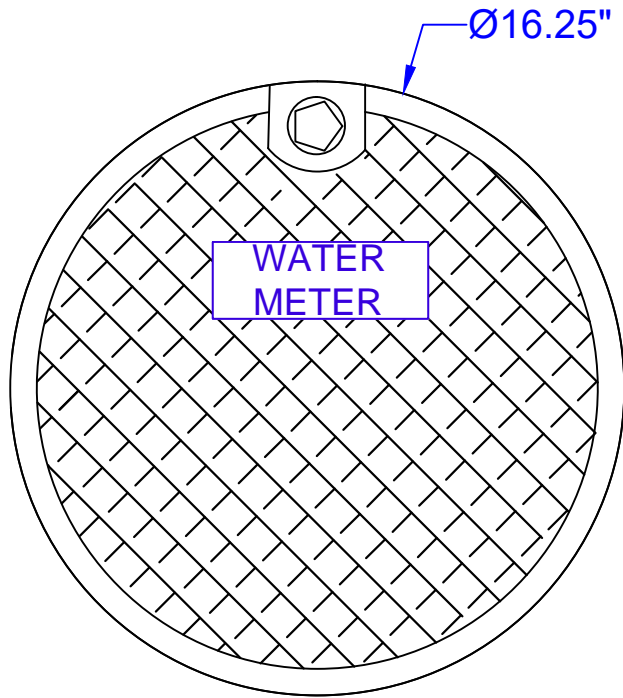
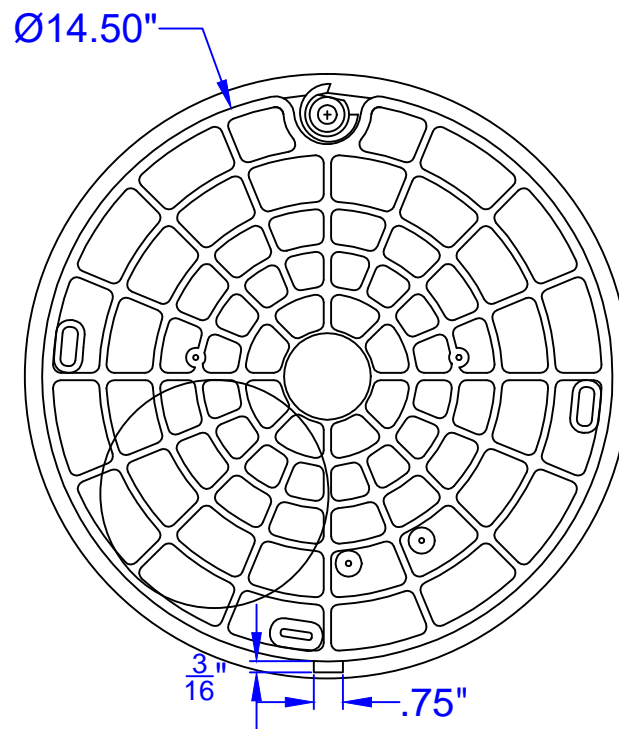


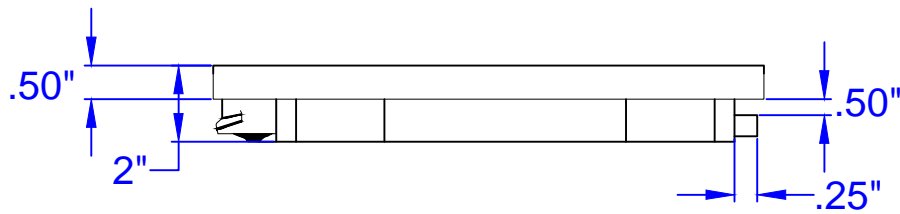
TOP VIEW



BOTTOM VIEW



SIDE VIEW



**PROPRIETARY**

General Notes

1	DLM	11/15/17
Revision	Drawn By	Date

WOMAN OWNED  
&  
MADE IN THE USA

MATERIAL: MAIN LID POLYMER  
FINISH PROCESS  
SURFACE FINISH 125

FINISH OR TREATMENT

(UNLESS OTHERWISE SPECIFIED)  
BEFORE FINISH PROCESS:  
DIMENSIONS IN INCHES  
(DIMENSIONS IN MILLIMETERS)  
TOLERANCES UNLESS SPECIFIED: XXX+- .0010 (.0254)  
XXX+- .005 (.127)  
XX+- .010 (.254)  
ANGLES +- .010 1/2"  
REMOVE BURRS AND BREAK CORNERS  
.005 (.127) MAX. UNLESS SPECIFIED  
INSIDE CORNERS .010 R. MAX.  
CONCENTRICITY .005 F.I.M.

**NICOR, INC.**  
PROPRIETARY NOTICE

This document, whether patentable or non-patentable subject matter, embodies proprietary and confidential information and is the exclusive property of NICOR, INC. It may not be reproduced, used or disclosed to others for any purpose except that for which it is loaned, and it shall be returned on demand. All rights reserved.

JEFF COOK  
NICOR  
100 COMMONS RD#7-355  
DRIPPING SPRINGS, TX  
78620

Clear Lid Hole  
16"

Drawing Number <b>CUSTOMER DRAWING</b>	Sheet 01
LID DIMENSION 16.25"	