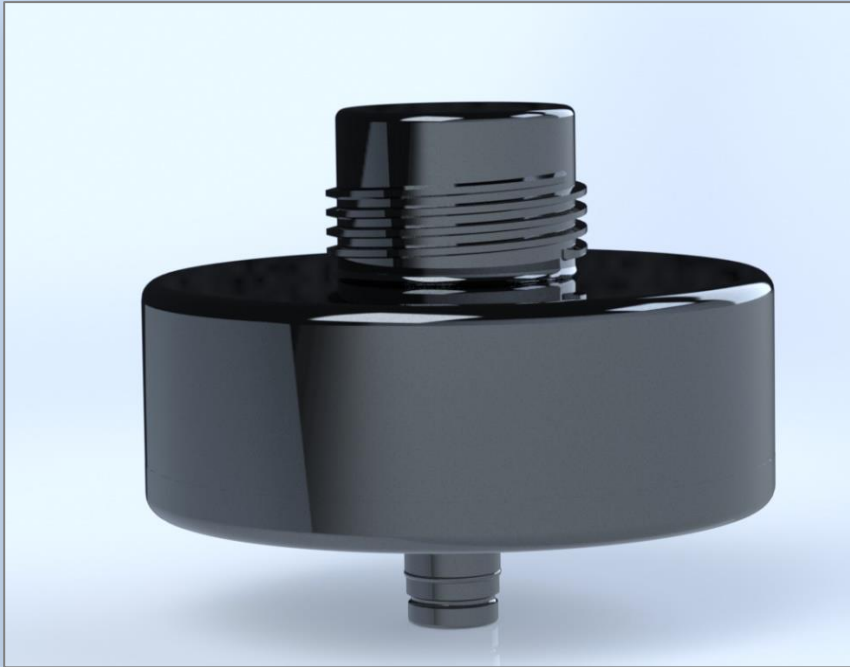


900MHz Under-lid Antenna for Utilities



Features

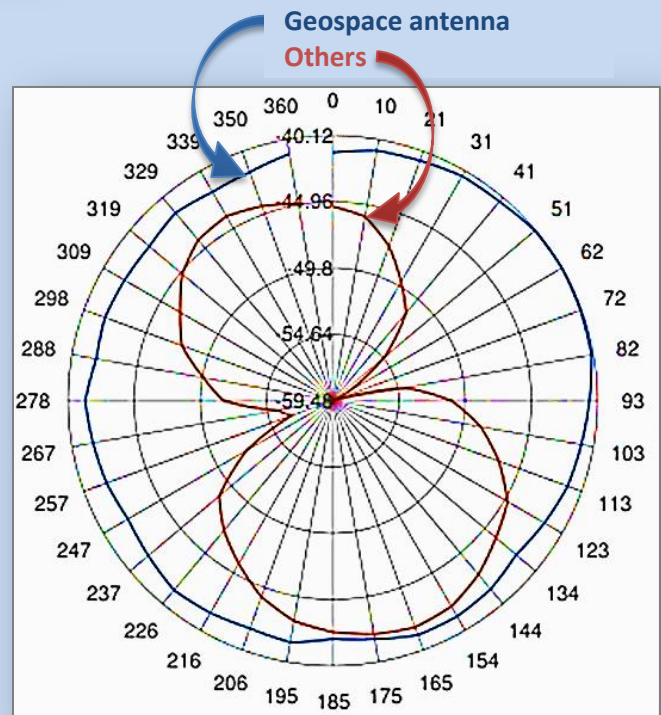
- Screw on design mounts to underside of lids
- Robust construction
- Hermitically sealed for extended life
- Larger gain reception area compared to other brands

Electrical Specifications

Frequency Band	902-928 MHz
Impedance	50Ω
E-Plane HPBW	30° Typical
Power Handling	5 W
VSWR	<1.3:1 Typical
Gain	2 dbi
H-Plane HPBW	Omnidirectional
Polarization	Vertical

Mechanical Specifications

Height	2-1/2"
Connector	Proprietary waterproof GNC
Operating range	-40° to 70°C
Diameter (Ground Plane)	4-1/4"
Mounting Type	1.75-8 ACME Thread Dual Blunt Start, Blunt End



Comparison with industry standard